

CUPOLEX SOIL CELLS

CUPOLEX RIALTO is a forming system for providing an easy, efficient and fast solution for constructing a pavement with heights from 300mm (12 inches) to 2500mm (100 inches). This cutting edge forming system comprises of CUPOLEX domes, pipes, bases and a patented bracing system that quickly interlock and connect to each other composing a self-bearing structure ready for the placement planting soil and furthermore the concrete pavement. The elevated CUPOLEX pavement supported by the matrix of columns formed by the Rialto tubes allows the system to support high load-bearing capacities. The elevated CUPOLEX RIALTO structure and the void created below the slab can be used to contain quality and unlimited soil-volumes, creating structurally beneficent and strong structure systems that are conducive to root growth while supporting any pavement design.

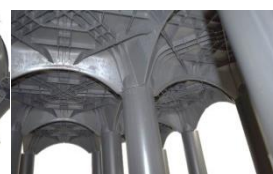
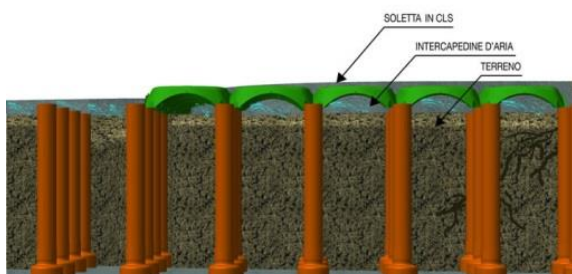
Features

- Enables trees to accept, store and transmit water, nutrients and energy
- Provides room in which roots can propagate. Rialto creates space below the pavements which is required for good soil life and the necessary biochemical exchanges to promote tree growth
- Trees are not planted in cramped planting pits and poor subsoil
- Roots do not colonize the area immediately underneath the paved surface, thus preventing structural pavement damage
- Solid and compacted ground for pavements is not required
- Can be designed to support any vehicular traffic
- Trees do not compromise or damage the structural integrity of the paved surfaces
- Urban trees can be adequately provided for in their urban setting
- Provides savings in time and materials compared to other tree and stormwater management systems. Flexible for any dimension on plan or depth and can be easily installed around new or existing underground utilities and pavement penetrations.
- Proven track record
- Allows for root breakout from the soil cells into surrounding soils
- Provides a complete opened void allowing for easy flow of water into and out of the Soil
- Time tested technology with over 500 million sq.ft installed
- manufactured to ISO 9000:2002 high quality standards



Advantages

- Arrives on site packaged and ready to be installed
- Quick and simple to install with basic hand tools
- Can be easily adapted to site variations
- Made out of 100% non-toxic recyclable material which contributes to LEED certified building
- Manufactured to ISO 9001:2000 high quality standards
- A full range of accessories and field support ensures secure construction
- Resolves issues involving exposed tree roots
- Cost effective-up to 50% cost saving compared to convention plastic shoring systems for creating soil cells
- Easy design and for application in new projects for restoration
- Simple to install
- Concrete design exceeds HS-20 loading
- Great adaptability



Product Data

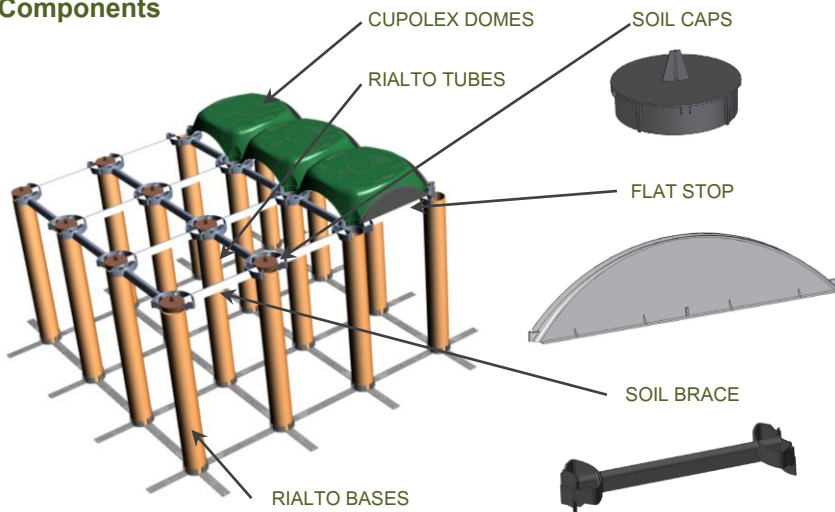
Made from 100% recycled Polypropylene (PP) plastic, the CUPOLEX RIALTO® forms provide the maximum performance and guarantees superior characteristics of stability and resistance in its structure to allow operations that are completed directly above the plastic CUPOLEX RIALTO® elements before and during the placement of the concrete. CUPOLEX RIALTO® tubes are available in a variety of depths to deal with different depths of soil volume requirements.

Overall Form Depth cm (inch)	Plan Dimension Installed cm (inch)	Concret Consumption to top of Domes m ³ /m ² (cy./sq.ft.)	Clear Void Equivalent cm (inch)	Soil Volume m ³ /m ² (cy./sq.ft.)
55 (22")	57x57 (23"x23")	0.038 (0.0045)	40 (16.0")	0.40 (0.048)
60 (24")	57x57 (23"x23")	0.040 (0.0048)	45 (18.0")	0.45 (0.056)
65 (26")	57x57 (23"x23")	0.042 (0.0051)	50 (20.0")	0.50 (0.063)
70 (28")	57x57 (23"x23")	0.044 (0.0054)	55 (22.0")	0.55 (0.073)
80 (30")	57x57 (23"x23")	0.046 (0.0057)	60 (24.0")	0.60 (0.078)
85 (32")	57x57 (23"x23")	0.048 (0.0060)	65 (26.0")	0.65 (0.085)
90 (34")	57x57 (23"x23")	0.050 (0.0063)	70 (28.0")	0.70 (0.093)
95 (36")	57x57 (23"x23")	0.052 (0.0066)	75 (30.0")	0.75 (0.102)
100 (38")	57x57 (23"x23")	0.054 (0.0069)	80 (32.0")	0.80 (0.109)
105 (40")	57x57 (23"x23")	0.056 (0.0072)	85 (34.0")	0.85 (0.117)
110 (42")	57x57 (23"x23")	0.058 (0.0075)	90 (36.0")	0.90 (0.124)
115 (44")	57x57 (23"x23")	0.060 (0.0078)	95 (38.0")	0.95 (0.131)
120 (46")	57x57 (23"x23")	0.062 (0.0081)	100 (40.0")	1.00 (0.138)
125 (48")	57x57 (23"x23")	0.064 (0.0084)	105 (42.0")	1.05 (0.145)
130 (50")	57x57 (23"x23")	0.066 (0.0087)	110 (44.0")	1.10 (0.153)
135 (52")	57x57 (23"x23")	0.068 (0.0090)	115 (46.0")	1.15 (0.162)
140 (54")	57x57 (23"x23")	0.070 (0.0093)	120 (48.0")	1.20 (0.169)
145 (56")	57x57 (23"x23")	0.072 (0.0096)	125 (50.0")	1.25 (0.176)
150 (58")	57x57 (23"x23")	0.074 (0.010)	130 (52.0")	1.30 (0.184)
155 (60")	57x57 (23"x23")	0.076 (0.0103)	135 (54.0")	1.35 (0.191)
160 (62")	57x57 (23"x23")	0.078 (0.0106)	140 (56.0")	1.40 (0.200)
165 (64")	57x57 (23"x23")	0.080 (0.0109)	145 (58.0")	1.45 (0.207)

Applications

Parking Lots, Streetscapes, Roadways, Footpaths, Plazas & Medians, Green Roofs, Break-Out Zones, Medians, Shopping Centers

Components



Storage & Handling

- All products are delivered on heat treated wood pallets with polythene wrapping
- Handle CUPOLEX RIALTO® with safety gloves and safety glasses
- Avoid impact
- Avoid tipping CUPOLEX RIALTO® pallets
- See specific instructions for installing product in temperatures below 0°C or above 35°C.
- CUPOLEX RIALTO® waste can be completely

Packaging

CUPOLEX SOIL CELLS® components are packaged on heat treated wood pallets wrapped with cellophane and certified for international shipping.

Pallet Dimension: 1.2m x 1.2m x h 2.0m (4' X 4' X h 6.5')

No. Of CUPOLEX Units per Pallet: 240

No. Of RIALTO TUBES per Pallet: VARIES

No. Of RIALTO BASES per BOX: 54

No. Of RIALTO SOIL CAPS per BOX: 170

No. Of RIALTO FLAT STOP per BOX: 270

No. Of RIALTO SOIL BRACE per BOX: 55

Area per CUPOLEX DOME Pallet: 78m² (840sf)

Weight per CUPOLEX DOME Unit: 1.20kg (2.64Lbs)

Total Weight per Pallet: 288kg (640Lbs)

Material

Made from 100% recycled Polypropylene (PP) plastic. The forms provide the maximum performance and guarantees superior

Issued 01/16
Consistent with manufacturer Pontarolo Engineering's policy of continued research and development, we reserve the right to modify or update the information contained in this or any other material published by Pontarolo Engineering®. The onus remains on the user of CUPOLEX® to obtain the most recent information available. Because Pontarolo Engineering® has no control over the installation, workmanship, accessory materials or conditions of application, no responsibility or expressed or implied warranty, either as to merchantability or fitness for a particular purpose, is made as to the performance or results of an installation using CUPOLEX® Forms, except that the physical characteristics of CUPOLEX® Forms shall meet or exceed the specifications published by Pontarolo Engineering®.

Cupolex®, Beton Stop®, Pontex®, Cupolex Windi®, Cupolex Rialto®, Cupolex Building Systems®, and any other marks, drawing or symbols identifying products and/or services of Cupolex Building Systems are trademarks of Pontarolo Engineering Inc.

