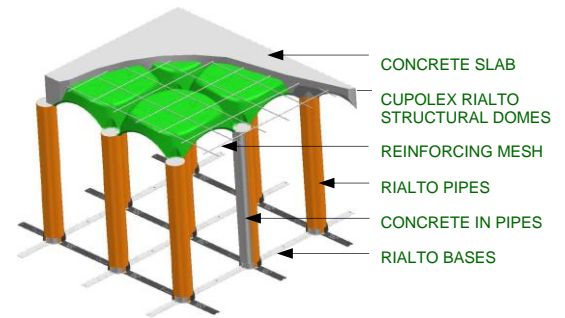




CUPOLEX RIALTO

CUPOLEX-RIALTO is a forming system for providing an easy, efficient and fast solution for constructing an aerated floor with heights from 500mm (20 inches) to 2500mm (100 inches). This cutting edge forming system comprises of CUPOLEX domes, pipes and bases that quickly interlock and connect to each other composing a self-bearing structure ready for the placement of a concrete slab. The elevated CUPOLEX slab supported by the matrix of columns formed by the pipes allows the system for high load-bearing capacities and the elevated CUPOLEX RIALTO structure and the void created below the slab can be used for various purposes and applications. All components that make up the CUPOLEX®-RIALTO® forming system are made from 100% recycled plastic.

CUPOLEX RIALTO slab on grade systems provide the most cost effective and sustainable solutions to conventional thickened slab designs. CUPOLEX RIALTO crawl space foundations provide solutions to moisture, mold, and venting problems that have been common to old fashioned crawl space foundation designs. CUPOLEX RIALTO slabs replace gravel or any other fill typically required below slabs constructed on native or engineered sub-grades consisting of low to non-expansive characteristics. RIALTO slabs also replace expensive rigid insulation typically used for creating floating concrete slabs on existing structures when weight limit is a factor.



Advantages

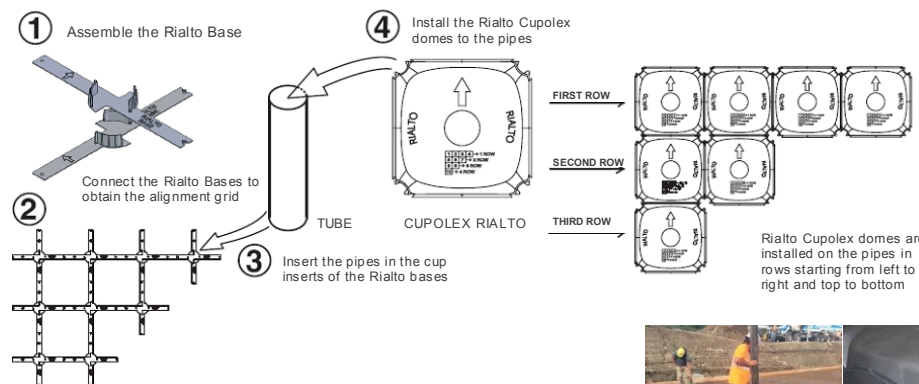
- Arrives on site packaged and ready to be installed
- Quick and simple to install with basic hand tools
- Can be easily adapted to site variations
- Minimizes concrete wastage
- Made out of 100% non-toxic recyclable material which contributes to LEED certified building
- One pallet of CUPOLEX RIALTO® can replaces up to 30 trucks of gravel or fill
- Minimizes construction traffic damage
- Manufactured to ISO 9001:2000 high quality standards
- A full range of accessories and field support ensures secure construction

Common Uses

- A sustainable and cost effective alternative to Structural Fill
- Creating subsurface Stormwater management tanks
- A cost effective and a more structural performing alternative to typical plastic shoring systems for creating Soil Cells
- Creating under slab soil layers for Tree Pit Root Protection
- Creating Crawl Spaces
- A Solution for Structural Weight limits and for post-construction settlement of sub grades.



Assembly



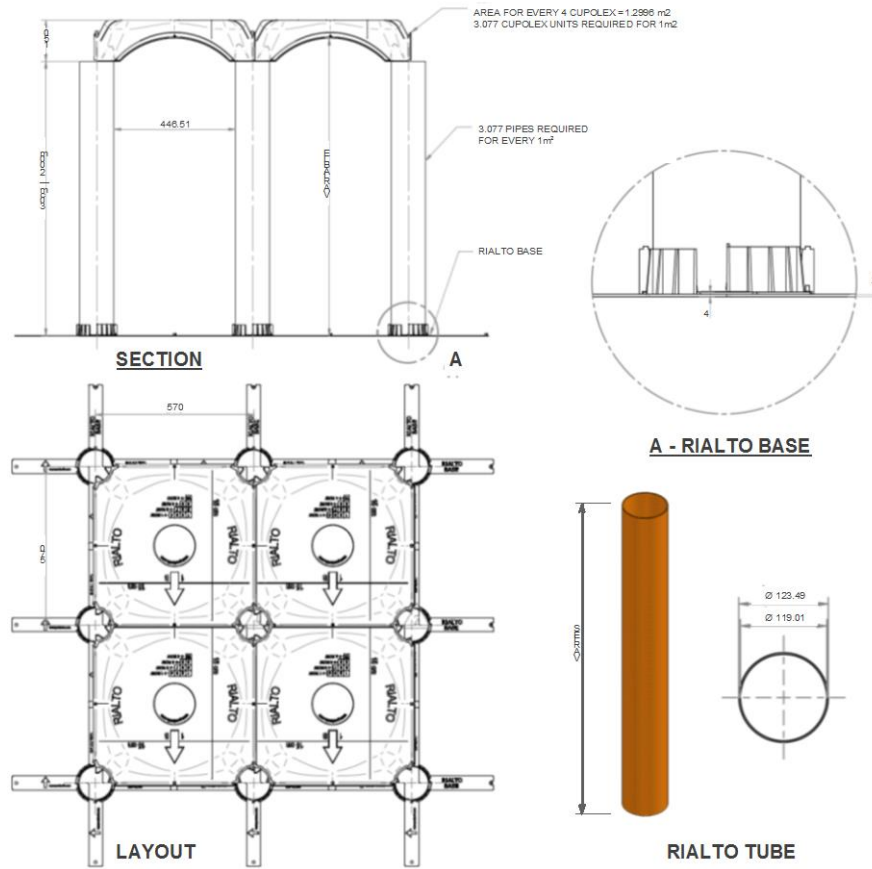
Material Requirements for 1m²

- 3 Rialto Bases;
- 3 Rialto Tubes of 125mm in diameter;
- 3 CUPOLEX Rialto3 CUPOLEX Rialt units;
- 0.052m³/m² of concrete consumption to fill pipes and to the top of the CUPOLEX dome elements;
- Welded Wire Mesh type as to design specifications;
- 0.01m³/m² of concrete for every 10mm of concrete above the CUPOL RIALTO domes.



Product Data

Made from 100% recycled Polypropylene (PP) plastic, the CUPOLEX RIALTO® forms provide the maximum performance and guarantees superior characteristics of stability and resistance in its structure to allow operations that are completed directly above the plastic CUPOLEX RIALTO® elements before and during the placement of the concrete. CUPOLEX RIALTO® tubes are available in a variety of depths to deal with different depths of fill or water storage requirements.



AREA FOR EVERY 4 CUPOLEX = 1.2996 m²
3.077 CUPOLEX UNITS REQUIRED FOR 1m²

3.077 PIPES REQUIRED FOR EVERY 1m²

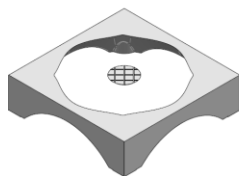
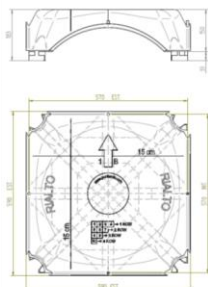
RIALTO BASE

SECTION

A - RIALTO BASE

RIALTO TUBE

LAYOUT



DIMENSIONS

INT: 570mm x 570mm
HEIGHT: 150mm (to top of CUPOLEX dome)

SURFACE COVER (top of CUPOLEX dome):

SINGLE UNIT:.....0.3249 m²;
4 CUPOLEX UNITS:.....1.2996 m²;

CONCRETE CONSUMPTION

SINGLE CUPOLEX DOME.....0.00734 m³
(Weight of concrete for single element.....17.605 kg)

Storage & Handling

- All products are delivered on heat treated wood pallets with polythene wrapping
- Handle CUPOLEX RIALTO® with safety gloves and safety glasses
- Avoid impact
- Avoid tipping CUPOLEX RIALTO® pallets
- See specific instructions for installing product in temperatures below 0°C or above 35°C.
- CUPOLEX RIALTO® waste can be completely

Packaging

CUPOLEX® is packaged on heat treated wood pallets wrapped with cellophane and certified for international shipping.

Pallet Dimension: 1.2m x 1.2m x h 2.0m (4' X 4' X h 6.5')

No. Of CUPOLEX Units per Pallet: 240

No. Of RIALTO TUBES per Pallet: VARIES

No. Of RIALTO BASES per Pallet: 324

Area per CUPOLEX DOME Pallet: 78m² (840sf)

Weight per CUPOLEX DOME Unit: 1.20kg (2.64Lbs)

Total Weight per Pallet: 288kg (640Lbs)

Material

Made from 100% recycled Polypropylene (PP) plastic. The forms provide the maximum performance and guarantees superior characteristics of stability and resistance in its structure to allow operations that are completed directly above the plastic CUPOLEX RIALTO® elements before and during the placement of the concrete.

Issued 01/16

Consistent with manufacturer Pontarolo Engineering's policy of continued research and development, we reserve the right to modify or update the information contained in this or any other material published by Pontarolo Engineering®. The onus remains on the user of CUPOLEX® to obtain the most recent information available. Because Pontarolo Engineering® has no control over the installation, workmanship, accessory materials or conditions of application, no responsibility or expressed or implied warranty, either as to merchantability or fitness for a particular purpose, is made as to the performance or results of an installation using CUPOLEX® Forms, except that the physical characteristics of CUPOLEX® Forms shall meet or exceed the specifications published by Pontarolo Engineering®.

Cupolex®, Beton Stop®, Pontex®, Cupolex Windi®, Cupolex Rialto®, Cupolex Building Systems®, and any other marks, drawing or symbols identifying products and/or services of Cupolex Building Systems are trademarks of Pontarolo Engineering Inc.

